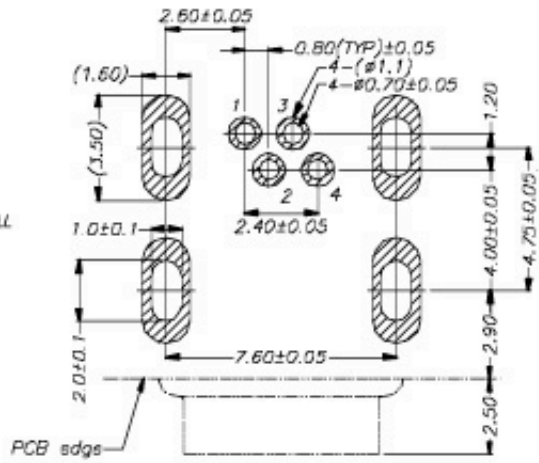
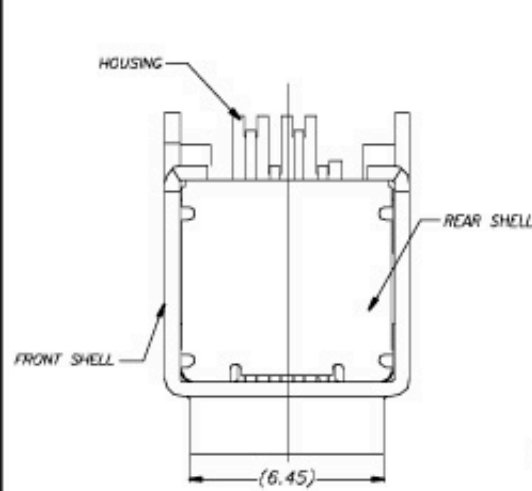
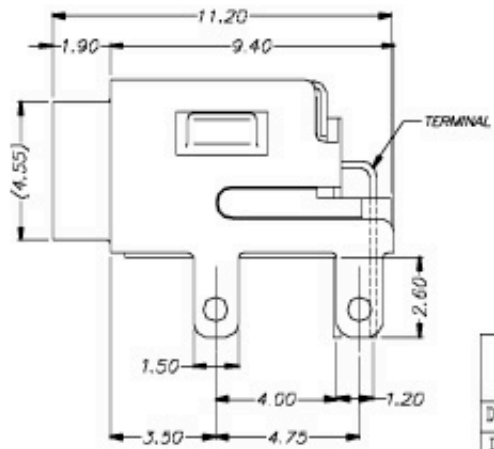
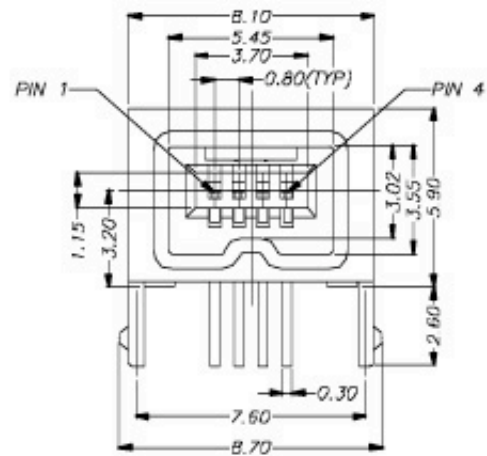


REV.	DESCRIPTION	DATE
------	-------------	------



PC BOARD LAYOUT  
(PCB t=1.6mm)



NOTE:  
1.Material:  
Housing: High Temperature Polyester  
GF. UL94V-0, Color Black.  
Front Shell: Steel.  
Rear Shell: SUS301.  
Contact: Copper Alloy.  
2.Plating:  
Front Shell: Tin 200µ.  
Contact: Au 30µ.

<b>CYPRESS INDUSTRIES</b>	DESCRIPTION: 1394-4P R/A DIP 12 PITCH (CUSTOMER DRAWING)			
	DATE: 04/18/02*	PART NO: 85-32006-201	REV: 1	
DWN: <i>Enda</i>	FILE NO: 85-32006-201	UNIT: MM		
CHK: <i>Allen</i>	SCALE: 5/1	SHEET: 1/1		
APP: <i>C. W. Chang</i>	TOLERANCES: DX: ±0.50 DXX: ±0.25	∠: ±1°		