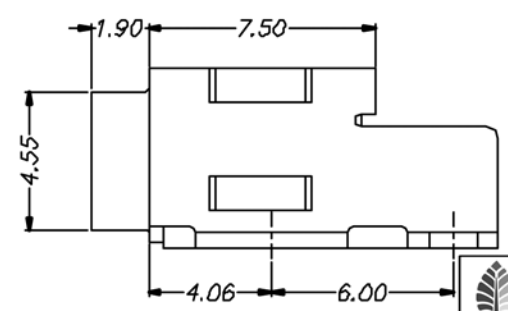
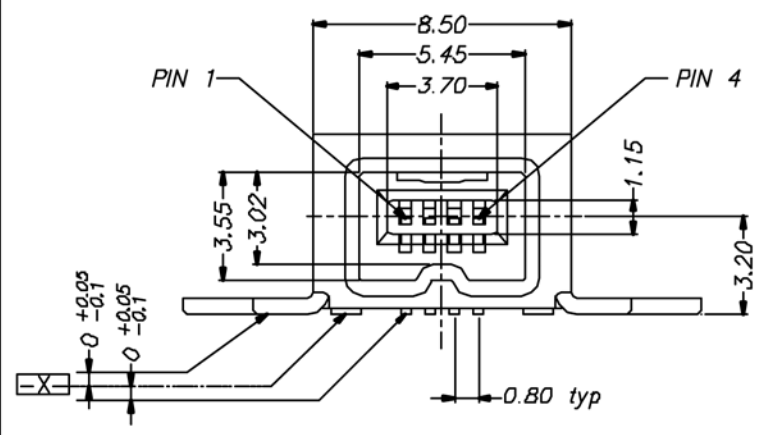
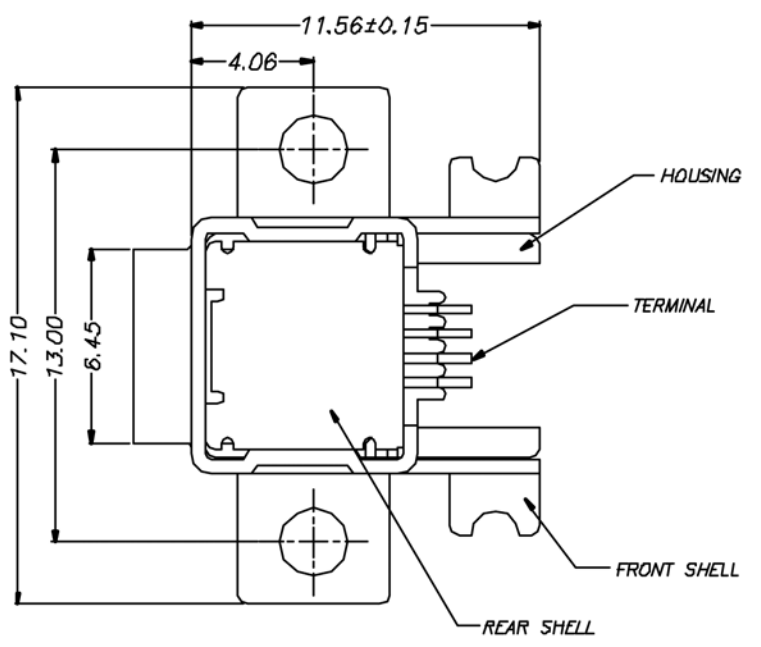
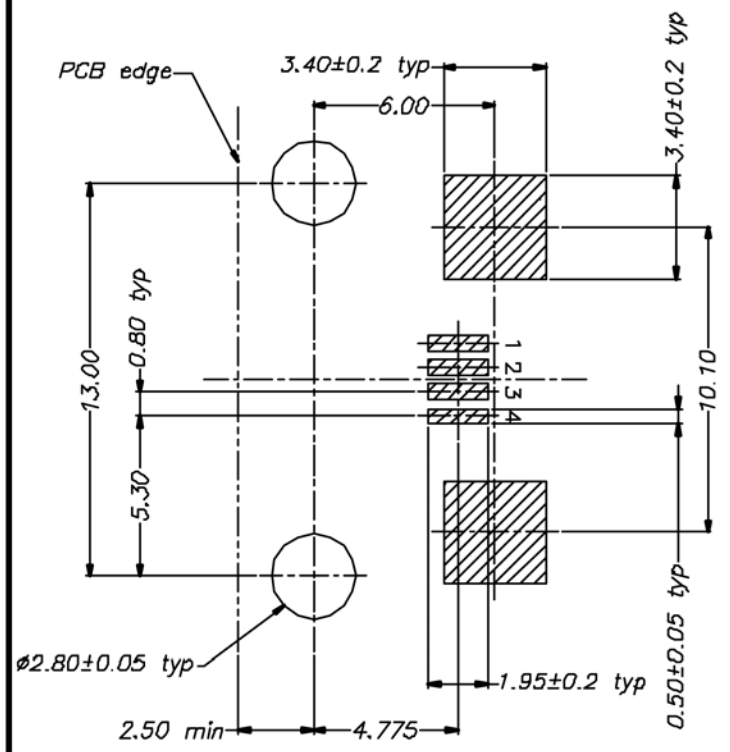


REV.	DESCRIPTION	DATE
------	-------------	------



NOTE:

- Material:
 - Housing: High Temperature Polyester G.F. UL94V-0, Color Black.
 - Front Shell: Steel.
 - Rear Shell: SUS301.
 - Contact: Copper Alloy.
- Plating:
 - Front Shell: Tin 200u".
 - Contact: Au 30u".

 www.cypressindustries.com		Description IEEE1394 4 Pin Receptacle R/A SMT W/ Side Flange RoHS Compliant	
DATE	04/18/02'	Part No	REV
DWN	<i>Evita</i>	CC1394-32006-601	1
CHK	<i>Allen</i>	SCALE: 4/1	UNIT
APP	<i>C.M. Chang</i>	TOLERANCES	MM
		DX: ± 0.50	SHEET
		DX: ± 0.25	1/1
		$\angle: \pm 1^\circ$	