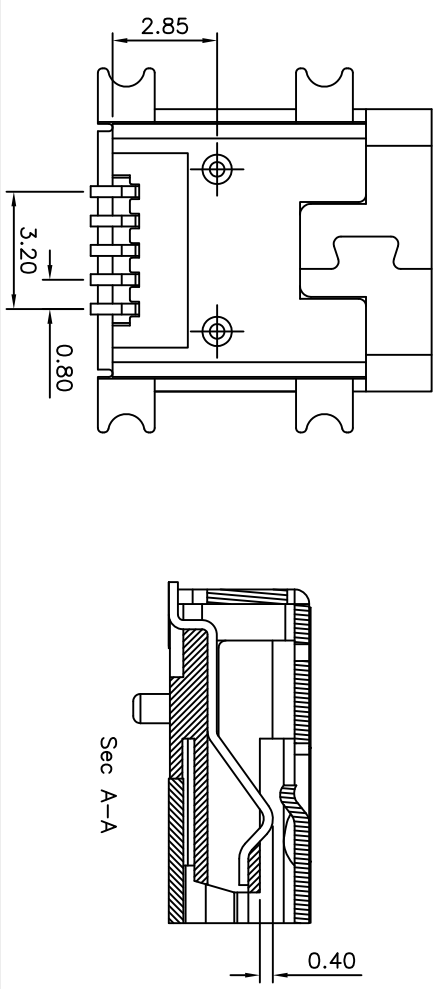
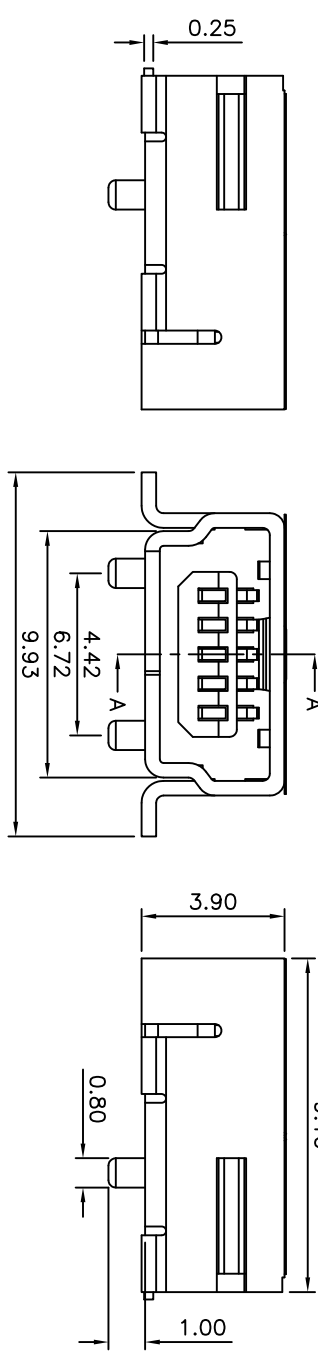
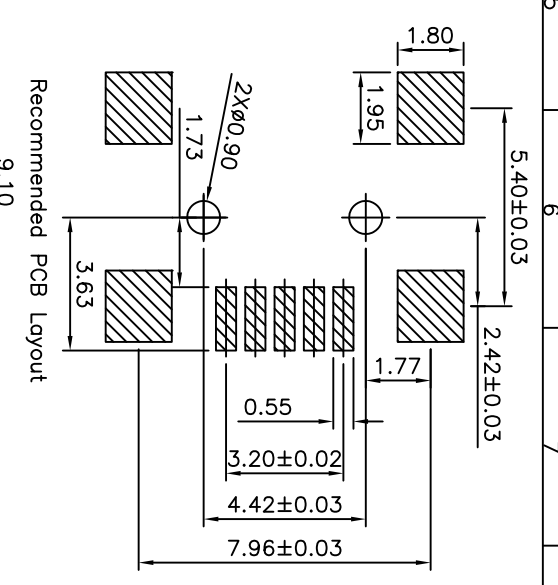
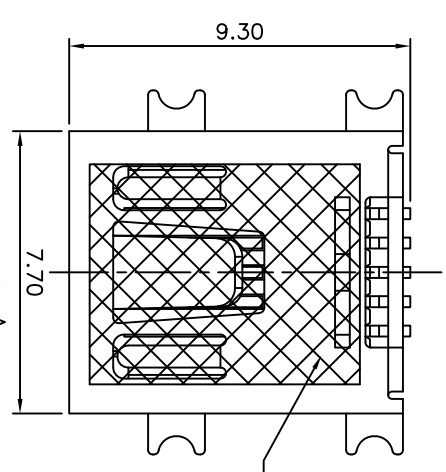


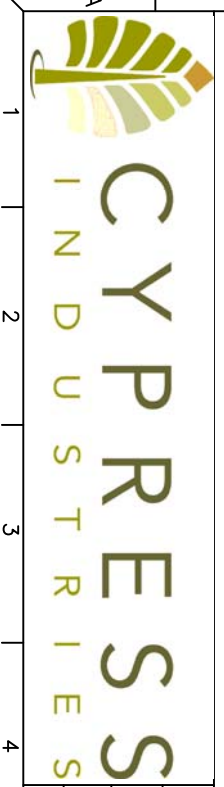
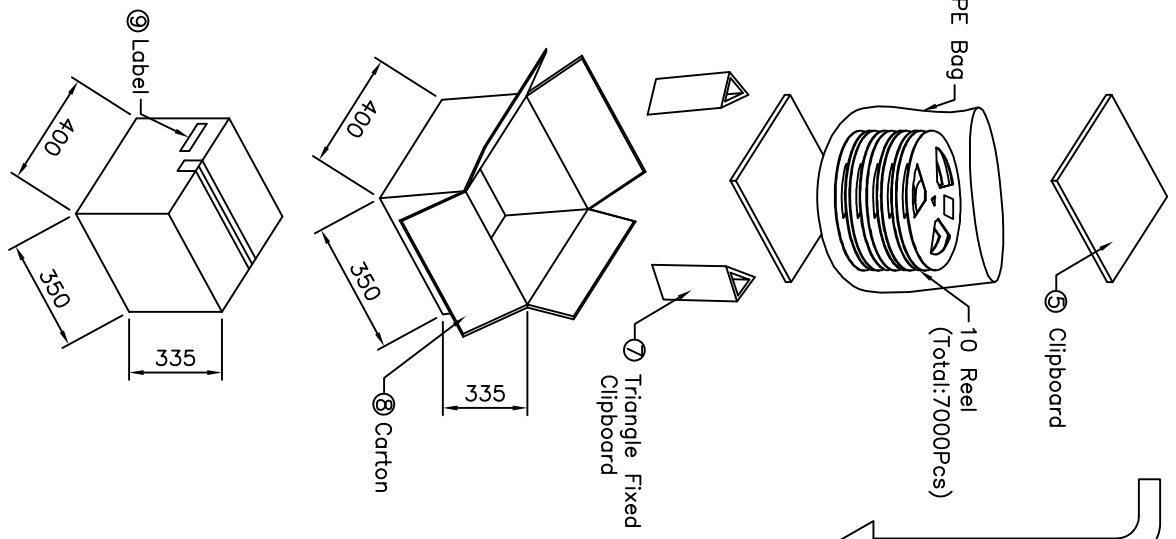
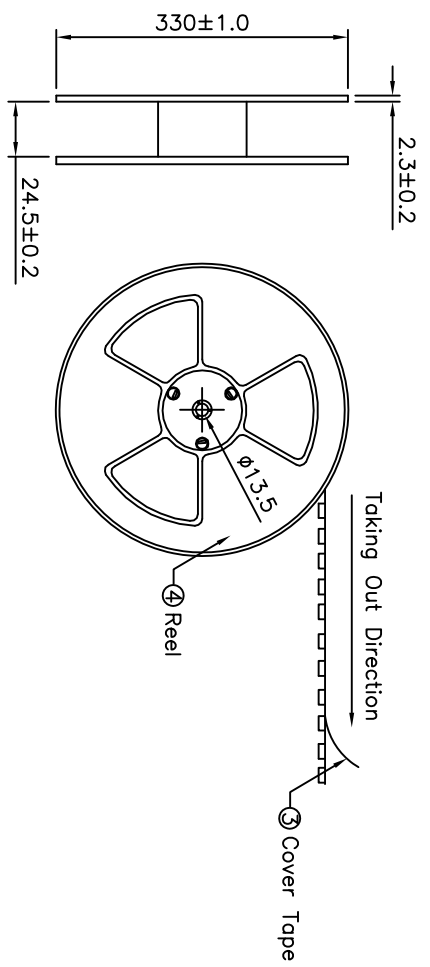
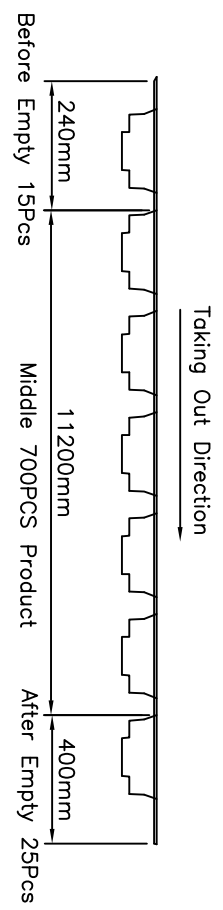
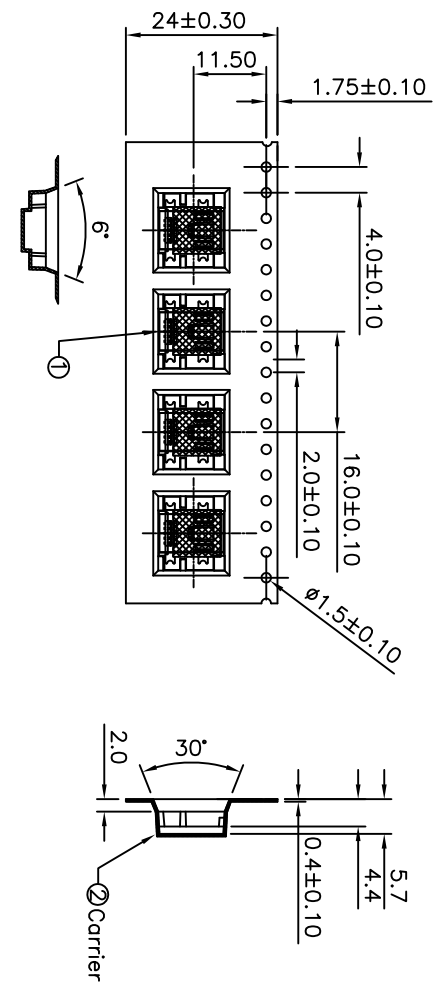
SPECIFICATIONS

Housing: LCP Glass Fiber, UL94V-0
 Contacts: C2680-H T=0.25
 Gold Plated On Contact Area
 Tin Plated On Solder Trail
 Shell: C2680 T=0.4
 All Plated Nickel
 RoHS Compliant



CATEGORY		APPROVED BY		UNLESS OTHERWISE SPECIFIED TOLERANCES ARE		NO. REV.		REVISIONS		CHK		DATE	
PART No. CCMUSBB-32005-35		MEI		X ±0.20 X' ±1"		AO				INGRID		12/11/2007	
DRAWING No. MSBBSWC-R7H-H		INGRID		.XX ±0.15 .X' ±0.5"		NEW RELEASE				CHK			
SCALE NONE		HZF		XXX ±0.05 .XX' ±0.2"									
REV. A0		HZF		UNIT mm									
CHECKED BY		DRAWING BY		TOLERANCES ARE									
NONE		HZF		X ±0.20 X' ±1"									
REV. A0		HZF		.XX ±0.15 .X' ±0.5"									
REV. A0		HZF		XXX ±0.05 .XX' ±0.2"									

SPECIFICATIONS
 1 Reel = 700Pcs
 1 Carton = 10 Reel = 7000pcs
 Carton Size: 400*350*335mm (K=K)
 PE Bag Size: 700*600*0.07mm



CATEGORY		APPROVED BY		UNLESS OTHERWISE SPECIFIED TOLERANCES ARE	
PART No. CCMUSBB-32005-35		MEI		.X ±0.20 .X' ±1'	
DRAWING No. MSB5BSWC-R7H-H		INGRID		.XX ±0.15 .X' ±0.5'	
SCALE NONE		CHECKED BY HZF		.XXX ±0.05 .XX' ±0.2'	
NONE		DRAWING BY HZF		NO.REV.	
REV.		AO		NEW RELEASE	
				REVISIONS	
				CHK	
				DATE	