



CYPRESS
INDUSTRIES

ADVANCED MANUFACTURING
AND DESIGN SERVICES



Capabilities Presentation
April 9, 2015

INDUSTRY CHALLENGES

Demand for more complex products with higher quality and longer life

Increase in competition

Shortened delivery times & reduced inventory

TODAY'S DYNAMIC BUSINESS ENVIRONMENT IS CREATING MORE CHALLENGES THAN EVER BEFORE

Greater flexibility in manufacturing locations

Lower production costs



ONE SOURCE MANUFACTURING SOLUTION: CYPRESS INDUSTRIES



- ❖ Cypress Industries offers a unique, innovative manufacturing business with exceptional customer service
- ❖ Aim is to deliver the best products, service and value in the industry
- ❖ Provide exceptional people, advanced ERP and quality systems, and the most efficient facilities in multiple countries

Cypress Industries Goal is to be the preeminent value engineering manufacturer for custom cables, plastic and metal products, with an intense focus on customer and employee satisfaction.

HOW WE REACH YOUR GOALS

- ❖ **LISTEN** to customers and provide best customer experience in all markets served
- ❖ **SOLVE** manufacturing problems with superior value engineering capabilities, efficient & technically capable facilities, and quality products
- ❖ **HELP** provide design and value engineering assistance, shorten lead times, consolidate the supply-chain and reduce costs,





BEST IN CLASS FACILITIES



- ❖ ISO 9001:2008 & UL certified manufacturing plants in US, India and Asia
- ❖ Advanced ERP systems for efficiency, product quality, repeatability and material traceability
- ❖ US and China facilities mirror capabilities to allow flexibility in manufacturing locations
- ❖ China's 75,000 sqft facility in Dongguan benefits from Asia's lower cost structures
- ❖ US 30,000 sqft facility in Austin, Texas, ensures customers receive flexibility, engineering, sales support and best value
- ❖ India 20k sqft Wire Harness & Custom Cables

MANUFACTURING CAPABILITIES OVERVIEW



**Electronics
Assembly**



**Plastic
Injection
Molding**



Metals

o Cable & Wire Harness Assembly

- › Mil-Spec Cables, Circular Connectors, Overmolding
- › Complex Harnesses, Hook-up wire, Multi-conductor
- › Custom Cables, Overmolded Cables & Connectors

o Electro-Mechanical Assembly

- › Controller Boxes, Box Builds, Small Assembly, Electromechanical Integration, Hi Pot, Functional Test

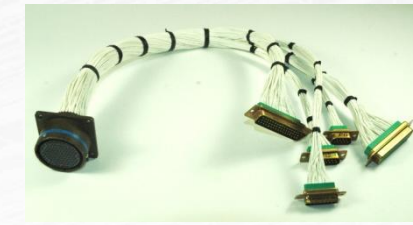
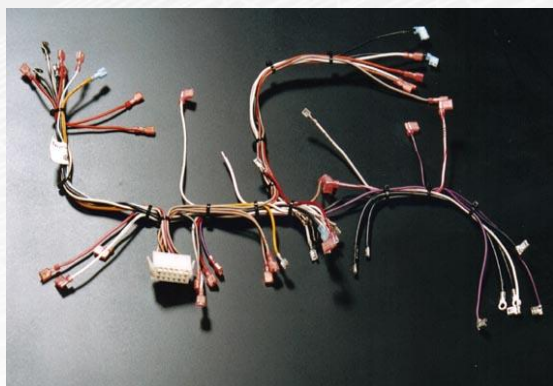
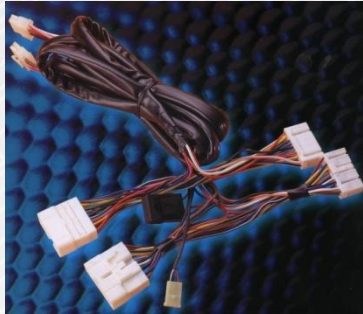
o Plastics Injection Molding

- › Mold Tooling & Parts

o Metals

- › Machining

CUSTOM WIRE HARNESS – CABLE ASSEMBLIES



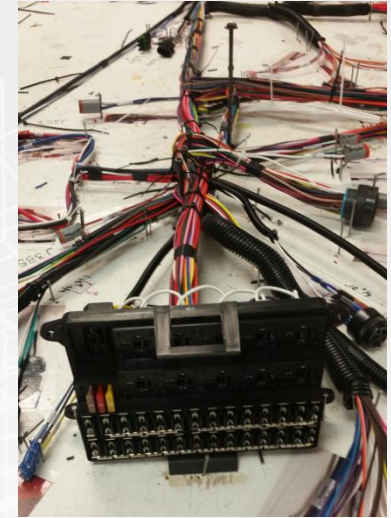
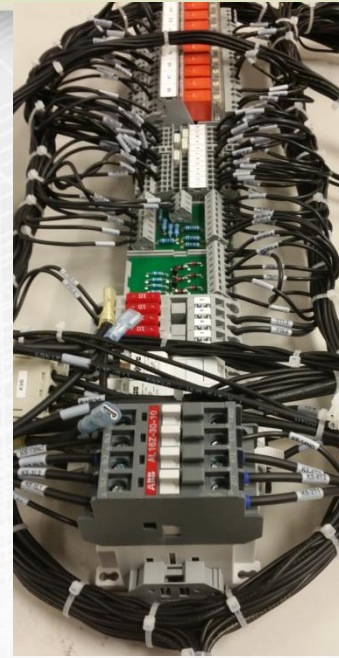
- Custom Cables
- Wire Harnesses
- Discrete Wire
- RF, Co-Axial, Microwave
- Heavy Gauge Cables

- Over-molded Cables
- Military Cables
- Splices
- D-Sub(9, 15, 25 etc)
- Circular Connectors

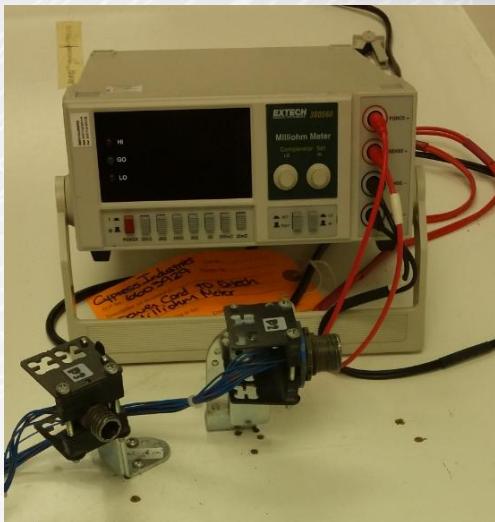
- Metal Connectors
- Custom Power Cables
- Ribbon cables
- RJ45 (CAT5E & 6), RJXX
- Custom Molds & Assemblies



Custom solutions, Braiding, Box Builds, Complex Harnesses...



100% Quality – All Facilities

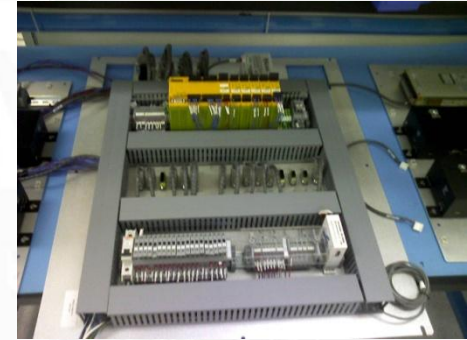
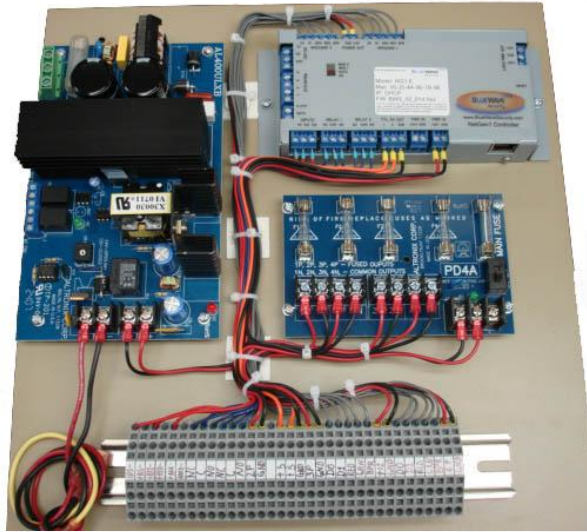


- o Full electrical test – Continuity, shorts, cross-connects
- o Ohm Resistance test – Shielding
- o Hi-Pot testing
- o Pull Test
- o Crimp Calibration Testing
- o Optical Comparator, CMM Capabilities
- o ISO and UL Certified
- o IPC 620 Trained

CUSTOM WIRE HARNESS – CABLE ASSEMBLIES



ELECTRONIC ASSEMBLY SERVICES



- o 30,000sqft Manufacturing in Austin, Texas
- o 75,000sqft Manufacturing in China
- o ISO Certified USA / ISO Certified China
- o ITAR Certified USA
- o UL Listed in USA and China
- o Cable Assemblies, Wire Harnesses etc.
- o Box Builds – Preparation of Chassis, Wiring and PCBs
- o Turnkey Product Builds and Packaging



PLASTIC INJECTION MOLDING AND TOOLING

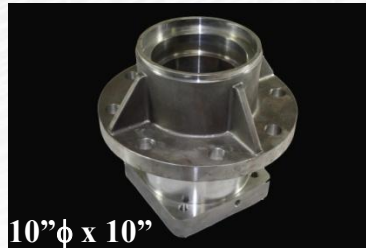
- o **16 Injection Molding Presses in Texas**
 - › 2- 1,000T/2-650T/400T//300T/ 2-230T/4-170T/100T /2-50T/ 35T
- o **23 Injection Molding Presses in China**
 - › 500 ton / 450 ton / 5 x 300 ton / 3 x 250 ton / 4 x 200 ton / 4 x 150 ton / 3 x 90 ton / 60 ton / 40 ton
- o **Machine Shop in Texas**
 - › Specializes in quick-turn Tooling Modifications, Optimize Uptime
- o **Tool Shop in China**
 - › In House Tooling for VERY large and complicated tools



17"φ x 13"



METAL FABRICATION



- Sand Casting
- Investment Casting
- Die Casting
- Aluminum Extrusion
- Stamping
- Forging
- Machining
- Plating, Paint, Heat Treating





METAL FABRICATION

o Die Casting



o Investment Casting



o Sand Casting



18"φ x 25"



Cypress Industries Certifications



Wiring Harness for Canada
ZPFW8.E305599



Wiring Harness Component
ZKLU2.E316302



Processed Wire – Component
ZKLU2.E316302



Processed Wire for Canada
ZKLU8.E316302



CHOOSING CYPRESS INDUSTRIES AS MANUFACTURING PARTNER

REDUCE overall costs and vendors in the supply chain because of broad product line and vast experience

PROVIDE expert value engineering and DFM

OFFER better service, response times and flexibility

CREATE quality product and services at US and China manufacturing sites

LISTEN to our customers and understand their needs

